



Difficult made easy!

FESTOOL

Stirring, brushing, carpet removal 12

Application overview | 253

Machine overview | 254

Stirrer | 256

RW 1000

RUSTOFIX brush machine | 258

RAS 180

Carpet remover | 259

TPE

FAKIR wallpaper perforator | 260

TP 220

System overview and accessories | 261

01

02

03

04

05

06

07

08

09

10

11

12

13

14

15

16

17

Festool engineers have always invented special products under the motto *Difficult made easy!*. The following products are very special because they provide solutions for tasks that would otherwise be performed with great effort, by hand or awkwardly with unsuitable tools.

Stirring, brushing, carpet removal

Four products that put you one step ahead.



How often do you perform tasks that involve extreme physical effort or energy, often because developing a tool specially for the job has never crossed anyone's mind.

Our engineers develop useful solutions for special tasks. For example, any interior fitter who has scraped a carpet from the floor using a hand scraper, or has peeled off wallpaper piece by piece, knows how unpleasant and time-consuming these tasks are. Or anyone who has painstakingly textured wooden surfaces or stirred



Ideal supplement to the stirrer: The mixing centre mixes while you concentrate on other tasks.

material with a machine that causes more problems than the material itself. For these very reasons we have developed the ideal solution:

- An extremely powerful stirrer
- A brush machine for texturing wood and timber
- A carpet remover for efficient carpet removal
- A wallpaper perforator that works on a completely new principle



The TPE-RS 100 carpet remover guarantees quick and effortless carpet removal.



You can texture wooden surfaces quickly and easily with the RUSTOFIX brush machine – ideal for renovating old buildings and restoring timber.

FESTOOL The system



Brush machine.

There is no simpler way to achieve a rustic wooden surface finish than with the RUSTOFIX.

Brush machine on page 258



Brush system.

The right brush for every working step: for texturing, intermediate sanding, smoothing.

Brushes on page 258



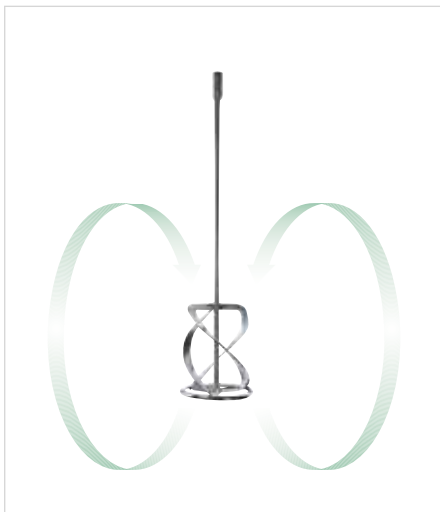
Extraction system.

Clean results both in the workshop and on the construction site with Festool mobile dust extractors.

Mobile dust extractors from page 263

Stirring technology for any application: The perfect way to mix.

Whether you need to mix thin or viscous materials – Festool always provides you with the right stirring technology. The ergonomic design makes it easy to operate. Efficient stirring action makes it economical to run, robust design for demanding work on construction sites, central connector for perfect true-running, efficient overload protection and precision bearing for a long service life. Stirring rods adapted to the material for maximum stirring efficiency: Mortar or cement for laying or fitting tiles, plaster for facades or adhesive for insulating boards. Refer to the table below to determine which Festool stirring rods are best for which applications, materials and materials quantities.



1



2

- 1 The Festool anticlockwise spiral stirring rod is specially designed for thin material with a low viscosity: when stirred, the material is drawn downwards in a circular motion to ensure splash-free mixing.
- 2 The Festool clockwise spiral stirring rod is specially designed for stiff material with a high viscosity: when stirred, the material is drawn upwards in a circular motion to ensure the heavy material is mixed thoroughly.

Material	Stirring rod			Setting
	Up to 25 kg	25 – 50 kg	50 kg upwards	
Mortar (sand/cement/water)	WR 120 L	WR 140 L	WR 160 L	3 – 6
Ready-mixed mortar (bagged material/water)	WR 120 L	WR 140 L	WR 160 L	3 – 6
Exterior paint, emulsion paint	WR 120 L	WR 140 L	WR 160 L	3 – 6
Tile cement (bagged material/additives/water/granulate)	WR 120 R	WR 140 R	WR 160 R	2 – 4
Cement (sand/cement/gravel/water)	WR 120 R	WR 140 R	WR 160 R	1 – 6
External rendering (sand/plaster/cement/water)	WR 120 R	WR 140 R	WR 160 R	1 – 6
Structural rendering (sand/plaster/cement/water)	WR 120 R	WR 140 R	WR 160 R	2 – 5
Filler (mixed bagged material/water)	–	WR 135	WR 125	1 – 6



Stirrer.

The right mix of power and stirring speed: Stirrer RW 1000 EQ.

Stirrer from page 256



Stirring rod system.

Always the right stirring rod: for both thin and viscous material.

Accessories on page 261



Mixing centre.

The ideal supplement to the stirrer. Takes over stirring while you concentrate on other tasks.

Mixing system on page 261

Stirring, brushing, carpet removal | Machine overview

Stirrer RW 1000



Main applications

Mixing and stirring:

- Ready-mixed mortar
- External rendering, structural rendering
- Filler, tile cement
- Exterior paint, emulsion paint

Strengths and benefits

- Powerful stirring action to mix stiff material thoroughly
- Ergonomic handle position for less strenuous work
- Rotating steel ring offers protection for demanding work on construction sites
- Smooth start-up prevents spraying of thin materials
- Zero-play precision bearing on gear shaft for a long service life

Next page 256

Power consumption	1010 W
Idle engine speed	250-600 min ⁻¹
Connecting thread	M14
Weight	4,2 kg

 = with MMC electronics



RUSTOFIX RAS 180



Main applications

- Texturing wooden surfaces
- Building renovation/Timber restoration
- Furniture manufacture
- Texturing shaped parts

Strengths and benefits

- Three working steps with one tool: Texturing, intermediate sanding, smoothing
- Adjustable support rollers for precise setting of the texturing depth
- Quick, easy brush changes
- Overload protection for a long service life
- Dust extraction system for healthy work
- MMC electronics for adaptation to the working material and temperature monitoring

Next page 258

Power consumption	1500 W
Idle engine speed	800-4000 min ⁻¹
Tool Ø	150 mm
Spindle thread	M14
Connection Ø d/e	27 mm
Weight	7,5 kg

 = with MMC electronics



Carpet remover TPE-RS 100



Main applications

For removing:

- Carpet
- Backing layer
- Adhesive layer

Strengths and benefits

- Hand-held use for awkward spots and stairs
- Extension handle for non-tiring work over large areas
- Powerful stirring action and reduction gearing for maximum economic efficiency
- High area capacity: 25 m² per hour on compact foam-backed carpets
- VS balancing for low-vibration work

Next page 259

Power consumption	620 W
Idle engine speed	6000 min ⁻¹
No. of strokes	12000 min ⁻¹
Sanding stroke	5 mm
Blade width	195 mm
Weight	3,6 kg



FAKIR TP 220 wallpaper perforator



Strengths and benefits

- Little effort is required because of the completely new working principle
- The adjustable penetration depth of the rollers protects the subsurface from being damaged
- The adjustable telescoping handle is perfect for working in rooms with high walls and on ceilings
- Protective cover for safe and clean transport
- Light weight for less tiring work

Next page 260

Telescoping handle length	0,9-1,3 m
Depth adjuster	3,5 mm
Cutting diameter	45 mm
Dimension (L x W x H)	168 x 224 x 52 mm
Weight	1,5 kg



01

02

03

04

05

06

07

08

09

10

11

12

13

14

15

16

17

Stirring, brushing, carpet removal | Stirrer RW 1000

Stirring – relaxed and easy.

Technological advantages of the RW 1000 EQ include a high-torque gear mechanism and quality MMC electronics on one hand and on the other hand, a quantum leap in ergonomics in the form of a double T-shaped handle for non-tiring work.

Perfect posture.
Double ergonomic T-shaped handle with three variable base positions.

MMC electronics.
Thumbwheel within easy reach:
Infinitely adjustable speed, controlled idling speed and smooth start-up, constant speed, temperature-dependent overload protection.

Smooth start-up.
Prevents spraying the material and jolting your wrists.

Automatic mixing.
The mixing centre allows for safe, automatic mixing while you concentrate on other jobs (available as an accessory).

Powerful stirring action.
The stirrer engine room: Maximum power for any material.

Precise true-running.
Double centring of the threaded ends makes sure the stirring rod runs concentrically, which protects the motor and gears.

Anticlockwise stirring rod.
For thin, low-viscosity materials.

Clockwise stirring rod.
For stiff, high-viscosity materials.

Stirrer RW 1000 – The different options

E = with electronics S = with SYSTAINER

Model	E	S	Equipment/Scope of delivery	Order no.
RW 1000 EQ/WR 120 L	●	—	additional side-mounted hand grip, stirring rod WR120 L, operation tool, in carton	711943
RW 1000 EQ/WR 120 R	●	—	additional side-mounted hand grip, stirring rod WR 120 R, operation tool, in carton	711944

Technical data, see page 254

Accessories see page 261

For power and smooth running, virtually unbeatable.



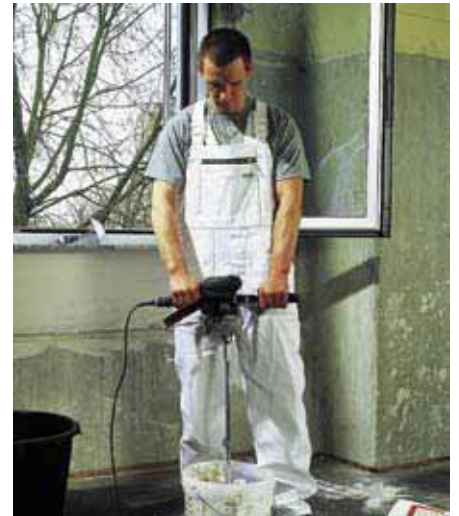
One mechanism.

The motor and gears are calibrated to ensure maximum torque efficiency at any speed. The material is mixed intensively but stays where it belongs – in the bucket.



Stronger than the stiffest mortar.

When the stirring gets tough, you'll be glad you have a RW 1000 EQ by your side. The machine not only operates with overwhelming power, but also with intelligent electronics: the thumbwheel allows you to adjust the speed from the handle gripping position to suit any material.



Double handle for half the trouble.

An ergonomic working posture is the foundation for great working results. Working in a strained position makes you tire quickly. This is why the RW 1000 EQ has a second handle: it can be adjusted to three positions, with all the control elements at hand. Everything under control.



No vibrating or shaking.

The screw connection between the stirrer and the stirring rod is protected from dirt and is also double-centred to make sure that the stirring rod runs concentrically. This contributes to its long service life, provides a comfortable grip and ensures that the rod runs smoothly.



Robust and reliable.

A rotating steel ring protects the stirrer in the event that it falls. Stirring rods are available in different versions for mixing practically any material. The Plug-It cable also prevents lengthy interruptions should it break while you are working. It can be easily replaced.



Time for more important jobs.

The MIC 1600 mixing centre takes over the mixing so that you can concentrate on other, more important jobs. Extremely robust with a stable pillar, secure grille and height-adjustable swivel arm.

- 01
- 02
- 03
- 04
- 05
- 06
- 07
- 08
- 09
- 10
- 11
- 12
- 13
- 14
- 15
- 16
- 17

Stirring, brushing, carpet removal | RUSTOFIX RAS 180

The quick way to produce a rustic wood effect.

RUSTOFIX is the name of a special brushing machine manufactured by Festool for producing three-dimensional, raised, textured wooden surfaces in no time at all. One tool and three special brushes for texturing, intermediate sanding and smoothing. Also ideal for shaped parts.

Dust extraction.

Guarantees clean and healthy working conditions in combination with a dust extractor.

MMC electronics.

With adjustable speed for adaptation to the working material and better results.

Depth adjuster.

Adjustable rear support roller: Less wear for brushes, no sanding through surface coatings.



Overload protection.

For a longer service life.

Quick brush changes.

Change brushes in an instant: Just one turn with a spanner is enough.

The RUSTOFIX is the perfect tool for anyone wishing to lend a rustic touch to wooden surfaces – as safe and economically efficient as possible. Whether in furniture manufacture, building renovation or timber restoration.



Three brushes for texturing, sanding, smoothing and cleaning: Three working steps with one tool.



Textured with the LD 85 brush.



Sanded with the KB 80 brush.



Smoothed and cleaned with the BG 85 brush.

The RUSTOFIX RAS 180 brush machine and accessories

E = with electronics S = with SYSTEMAINER

Model	E	S	Equipment/Scope of delivery	Order no.
RAS 180.03 E-HR	●	—	LD 85 brush, KB 80 brush, extractor hood with handle, tool arbour, clamping flange, operation tool, in carrying case	570724
Rustilon brushes LD 85	—	—	for texturing, with standard steel wire, steel core, Exterior Ø 150 mm, Width 85 mm, Hole Ø 50 mm	411549
Rustilon brushes KB 80	—	—	for intermediate sanding, plastic bristles with embedded K80 grit, die-cast plastic core, Exterior Ø 150 mm, Width 85 mm, Hole Ø 16/30 mm	411969
Rustilon brushes BG 85	—	—	for smoothing, with sisal bristles, steel core, Exterior Ø 150 mm, Width 80 mm, Hole Ø 50 mm	411887

Technical data, see page 254

Quick and easy.

Manoeuvrability is crucial when things get tight. The TPE makes the difficult job easy! It removes carpet more quickly than by hand. Moreover, conventional methods require two pairs of hands; one person lifts the carpet while the other uses a scraper to remove the adhesive from the sublayer. With the TPE, you can do it all by yourself.

High coverage capacity.

Efficient cutting action, strips compact foam-backed carpets at up to 25 m² per hour.

Wear-resistant blade.

Durable and reliable, easy to sharpen.

Lightweight and handy.

The machine weighs only 3.6 kg!



Ergonomic handle.

For working in awkward spots and on stairs.

plug it.

Change machines with a turn of the wrist. Cable breaks will not hold you up for long. Simply replace the cable and continue your work.

Extension handle mount.

For working in a more natural position.

Vibration stop.

VS balancing and smooth running relieve the stress on your wrists.

The carpet blade moves back and forth, doing all the hard work for you. It quickly works its way in between the sublayer and the adhesive layer. All you have to do is push forwards slightly. Saving time has never been easier.



Its manoeuvrability makes it suitable for stairs.



The carpet remover also manages well along edges.



Work more easily and in a natural position. Adjustable to match your height.



The wear-resistant carpet blade ensures maximum stripping capacity.

Carpet remover TPE and accessories

E = with electronics S = with SYSTAINER

Model	E	S	Equipment/Scope of delivery	Order no.
TPE-RS 100 Q-Plus	—	●	in a SYSTAINER SYS 3	567743
Extension-handle SG-TPE/RS 1	—	—	in two sections, allows use of TPE in standing position, with 2 additional hand grips and shoulder cushion, Length 1700 mm, in carton	486375
Carpet remover-blade TM 195	—	—	for TPE-RS 100, Blade width 195 mm, in carton	486374
SYSTAINER SYS-TPE	—	—	SYSTAINER size SYS 3	487240

Technical data, see page 254

Stirring, brushing, carpet removal | FAKIR TP 220 wallpaper perforator

Attacks the wallpaper. Then removes it.

The new FAKIR. Thoroughly rips up wallpaper while protecting walls. Because of the rollers that are quickly rotating at different speeds, funnel-shaped openings are produced that let water optimally flow in behind the wallpaper and then penetrate into it.

Quick roller change.

The exchangeable rollers make the FAKIR an extremely economical solution.

A real improvement.

Because of its light weight and adjustable telescoping handle, the FAKIR is optimally suited for working in rooms with high walls and on ceilings.

Safe and clean.

The protective cover ensures that the FAKIR is stored securely, and protects the rollers during transport.



Protects the subsurface.

The penetration depth of the rollers can be set precisely – and walls will be protected.

Saves time and effort.

Rollers that turn quickly at different speeds ensure that the wallpaper is ripped apart effectively.

Completely new working principle.

In contrast to the usual rollers with needles, the FAKIR produces funnel-shaped openings in wallpaper so that water can flow in optimally behind the wallpaper and then penetrate it.

The new FAKIR is brutal on wallpaper but gentle on walls. Because not all wallpaper is the same, the penetration depth for the rollers can be set individually. This protects the subsurface from being damaged. The completely new working principle reduces the force that is necessary and thus makes the FAKIR the perfect tool for rooms with high ceilings.



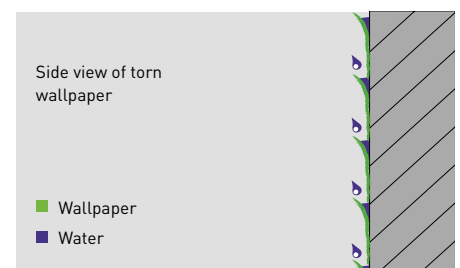
The substrate is protected by the depth adjustment function.



High-walled rooms and ceilings are no problem with the telescoping handle.



The protective cover for safe and clean transport.



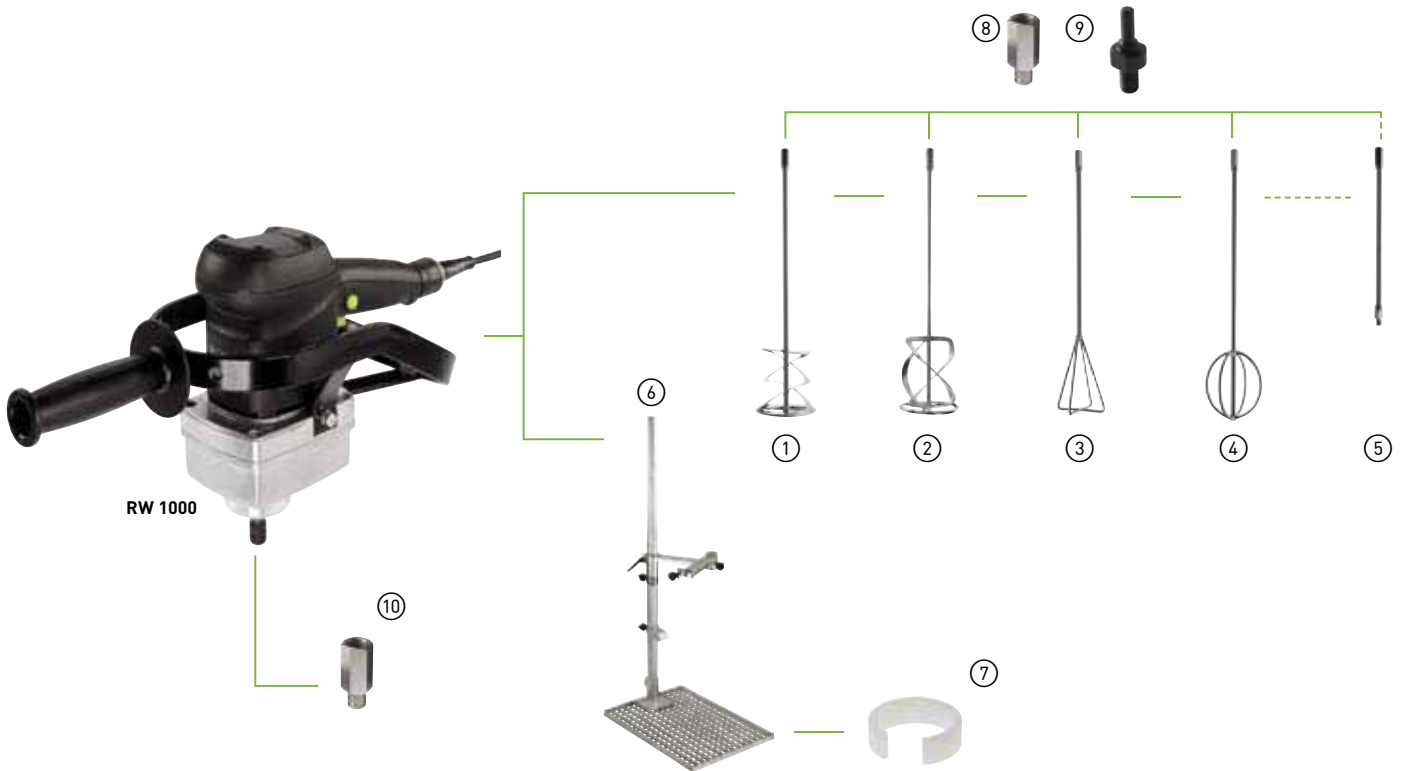
The FAKIR's working principle.

FAKIR TP 220 wallpaper perforator and accessories

E = with electronics S = with SYSTAINER

Model	E	S	Equipment/Scope of delivery	Order no.
TP 220	—	—	protective cover, telescoping handle, in carton	495747
Replacement roller EW-TP 220	—	—	2 rollers, in carton	496111

Technical data, see page 255


Accessories for stirrer RW 1000

Product	Explanation	Order no.
① Stirring rod with clockwise motion WR 120 R	up to 25 kg, Diameter 120 mm, Length 625 mm, height of rod head 110 mm, in self-service display pack	434285
Stirring rod with clockwise motion WR 140 R	up to 50 kg, Diameter 140 mm, Length 625 mm, height of rod head 145 mm, in self-service display pack	484288
Stirring rod with clockwise motion WR 140 R-N	up to 50 kg, stainless steel model, Diameter 140 mm, Length 625 mm, height of rod head 145 mm, in self-service display pack	485824
Stirring rod with clockwise motion WR 160 R	up to 150 kg, Diameter 160 mm, Length 625 mm, height of rod head 210 mm, in self-service display pack	484289
Stirring rod with clockwise motion WR 160 R-N	up to 150 kg, stainless steel model, Diameter 160 mm, Length 625 mm, height of rod head 210 mm, in self-service display pack	485825
② Stirring rod with anticlockwise motion WR 120 L	up to 25 kg, Diameter 120 mm, Length 625 mm, height of rod head 140 mm, in self-service display pack	484285
Stirring rod with anticlockwise motion WR 140 L	up to 50 kg, Diameter 140 mm, Length 625 mm, height of rod head 180 mm, in self-service display pack	484286
Stirring rod with anticlockwise motion WR 160 L	up to 150 kg, Diameter 160 mm, Length 780 mm, height of rod head 210 mm, in self-service display pack	484287
③ Stirring rod WR 125	triangular, Diameter 125 mm, Length 625 mm, height of rod head 180 mm, in self-service display pack	483701
④ Stirring rod WR 135	circular, Diameter 135 mm, Length 625 mm, height of rod head 160 mm, in self-service display pack	436556
⑤ Guide extension V400/M14	to extend stirring rods, M14 x 400 mm long, in self-service display pack	483310
⑥ Stirrer stand MIC 1600 RW	guide column, double-hinged extension arm, grid, adjusting ring, mixing tub support, hinged extension arm and adjusting rings made of heavy duty, precision steel tubing, galvanised surfaces, reducing ring for standard clamping flange Ø 43 mm (available as accessory), Column height 1600 mm, Tool holder Ø 53 mm, Length of extension arm 600 mm, Weight 16 kg	484250
⑦ Adapter ring D 53/D 43	to allow the use of the MIC1600 mixing centre with a Ø 43 mm clamping flange	484523
⑧ Adapter 5/8"x16UNF/M14	for the use of Festool stirring rods on machines with 5/8"x16UNF connection, in self-service display pack	484290
⑨ Adapter 1/2"x20UNF/M14	for the use of Festool stirring rods on machines with 1/2"x20UNF connection, in self-service display pack	484292
Adapter AD-D10/M14	for Festool stirrers: to mount in a drill chuck, for sanding disc with M14 thread: for mounting in drilling and boring machines, for polishing pad Ø80: for use in cordless drills, Clamping flange Ø 10 mm, in self-service display pack	483944
⑩ Adapter M14/ 1/2"x20UNF	for the use of stirring rods with 1/2"x20UNF connection on the Festool stirrer, in self-service display pack	484291